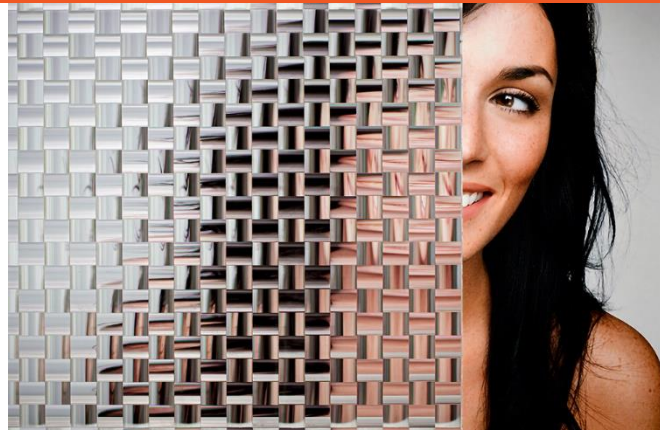


SOLYX SimGlas®

SX-1281 Crystal Weave ½"



Product Description

SX-1281 Crystal Weave ½" is an embossed polyester film designed to resemble a ½ inch weave pattern. This film provides obscured visibility while allowing excellent light transmission.

Specifications

Product Code	SX-1281
Product Family	Geometric
Film Type	Polyester
Adhesive Type	Pressure-Sensitive
Usage	Interior
Available Width(s)	60"
Full Roll Length	100 linear feet
Thickness	2 mil
Visible Light Transmission	92%
UV Rejection	98%

Product Construction

Face Film

2 mil Polyester

Adhesive

Clear, Pressure-Sensitive

Release Liner

Silicone Coated

Product Details

SX-1281 Crystal Weave ½" is an embossed polyester film designed to resemble cut crystal in an elegant weave configuration. The pattern consists of blocks, each measuring ½ inch. This 2-mil thick film is supplied with a silicone-coated liner which protects the clear, pressure-sensitive adhesive. Recommended for application to interior glass, single- or double-pane, it is ideal for privacy, decorative, or architectural applications.

Flammability Rating

This product meets ASTM E84 and is classified as Class A as defined in NFPA 101, Life Safety Code®.

LEED Credit EQ 4.1 Low Emitting Materials, Adhesives & Sealants

This product has zero VOC content according to 40 CFR 59, Subpart D (EPA method 24).

Installation and Warranty

Installation

Installation should be in accordance with the manufacturer's installation instructions. It is applied using the same methods used for installing window tinting films.

Warranty

This product will be free from defects in material and manufacture for a period of five (5) years from the date of installation. See warranty information for specific details.

Product Distribution and Contact Information

Distribution

SOLYX® Decorative Films are available through authorized Installing Dealers, Distributors, or directly from Decorative Films, LLC.

Samples submitted upon request.

Contact Information

Decorative Films, LLC

1-888-657-5224

www.decorativefilm.com